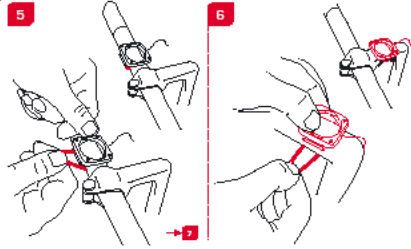
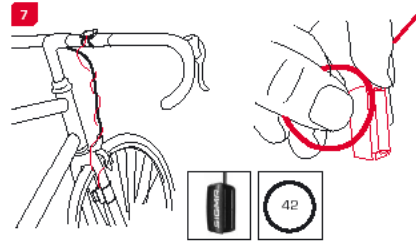


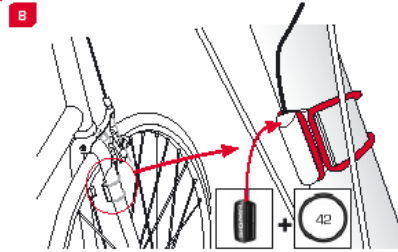
Montage / Installation / Installazione / Montaje / Montage



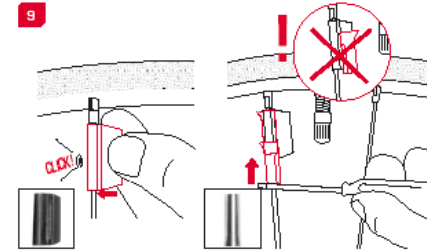
Montage / Installation / Installazione / Montaje / Montage



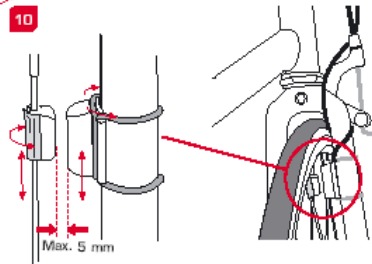
Montage / Installation / Installazione / Montaje / Montage



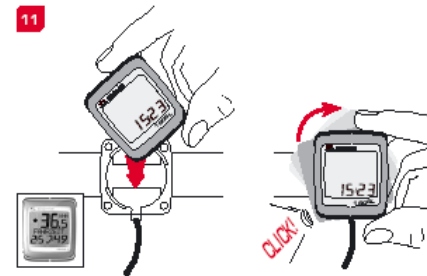
Montage / Installation / Installazione / Montaje / Montage



Montage / Installation / Installazione / Montaje / Montage



Montage / Installation / Installazione / Montaje / Montage



SIGMA BIKE COMPUTER
BC 1606L

BIKE COMPUTER
TOPLINE



WWW.SIGMASPORT.COM

SIGMA EUROPA
SIGMA Elektro GmbH
Dr. Jochen Leber - Straße 65
D 67433 Neustadt a.d.W.
Tel. +49 (0)6321 0120 198
Fax +49 (0)6321 0120 54

SIGMA LEA
North America
1057 Kingsford Drive
Baton Rouge, LA 70810, USA
Tel. +1 623 761 1106
Fax +1 623 761 1107
Toll Free: 888 744 6277

SIGMA ASIA
Asia, Australia, South America
7F-1, No. 103, Tu-Tun Gih Street,
Taichung City, Taiwan
Tel. +886 4 2475 0577
Fax +886 4 2475 0563



WWW.SIGMASPORT.COM

BC 1606L

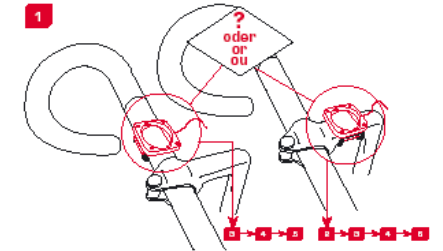
Printed in Germany. 08616D/1

Inštalácia

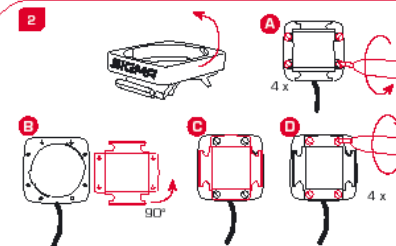
Inhalt / Content / Contenu / Contenido / Contenido / Inhoud



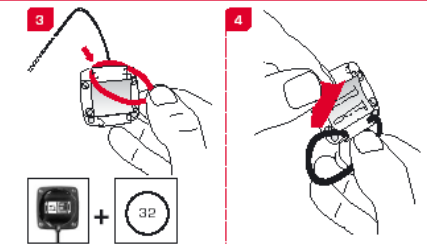
Montage / Installation / Installazione / Montaje / Montage



Montage / Installation / Installazione / Montaje / Montage



Montage / Installation / Installazione / Montaje / Montage



Funkcie

MODE 2

TRIP DIST
TRIP TIME
AVG. SPEED
AVG. CADENCE
MAX. SPEED
STOPWATCH
TIMER +/-
TRIP +/-

RESET

CLOCK
STOPWATCH
TIMER UP/DOWN
TRIP UP/DOWN
ODO BIKE 1/2*
TOTAL ODO
TIME BIKE 1/2*
TOTAL TIME*

MODE 2

• MODE 1/2 button:
Open the functions
• RESET button:
Resets the listed
functions

RESET = Light
SET

MODE 1

LANGUAGE
WS BIKE 1/2
SHOW CAD
TRIP UP/DOWN
TIMER UP/DOWN
etc.

TRIP DIST
TRIP TIME
CADENCE
AVG. SPEED
AVG. CADENCE
MAX. SPEED

*not whilst moving

Funkcie

DENNÍ KM
DOBA JIZDY
PR.M. KMH
PR.M. TEMPO
MAX. KMH
STOPKY
ASOVA +/-
PO ITADLO KM +/-
RESET

AS
STOPKY
ASOVA +/-
PO ITADLO KM +/-
KM JIZDENI KOLO 1/2*
CELKOVE KM
AS JIZDENI KOLO 1/2*
CELKOVA DOBA*
MODE 2

RESET + SET = SV TLO

• Tlačko MODE 1/2:
Výber funkcie
• Tlačko RESET:
vynulovanie vybraných funkcií

SET
JAZYK
ROZM. R. KOOLA 1/2
TEMPO ŠLAPANÍ
PO ITADLO KM +/-
ASOVA +/-
atď.

MODE 1
DENNÍ KM
DOBA JIZDY
TEMPO ŠLAPANÍ
PR.M. KMH
PR.M. TEMPO
MAX. KMH

*na b h m j izdy

Funkcie

RESET = tlačítko na vynulovanie:

TRIP DIST = denné km

TRIP TIME = doba jazdy

AVG SPEED = priem.rýchlosť

AVG CADENCE = priem.tempo

MAX SPEED = max.rýchlosť

STOPWATCH = stopky

TIMER = časovač +/-

TRIP = počítadlo km +/-

SET – nastavenie :

LANGUAGE = jazyk

WS BIKE 1 / 2 = rozmer kolesa 1 / 2

SHOW CAD = tempo šľapania

TRIP UP/DOWN = počítadlo km +/-

TIMER UP/DOWN = časovač +/-
atď.

MODE 1 = tlač.na vyvolanie f.:

TRIP DIST = denné km

TRIP TIME = doba jazdy

CADAENCE = tempo šľapania

AVG SPEED = priem.rýchlosť

AVG CADENCE = priem.tempo

MAX SPEED = max.rýchlosť

MODE 2 = tlač.na vyvolanie f.:

CLOCK = hodiny

STOPWATCH = stopky

TIMER = časovač +/-

TRIP UP/DOWN = počítadlo km +/-

ODO BIKE 1/ 2=km na bicykel 1/ 2

TOTAL ODO = celkové km*

TIME BIKE 1/ 2=čas na bicykel 1/ 2

TOTAL TIME = celk. doba jazdy*

* - nie počas jazdy

Nastavenie obvodu kolesa

Stlačte tlačítko SET po dobu 3 sek. Potom pomocou tlačítka MODE nastavte hodnotu.

Počkajte 3 sek., zobrazenie prejde automaticky na ďalšie miesto. Nastavovanie ukončíte opätovným stlačením tlačítka SET na dobu 3 sek.

Wheel Size Chart (Radgröße/Wheel Size/Circonférence de roue)

Wheel Size Chart (Misura della ruota/Tamaño de rueda/Wielmaat)

A

mm x 3,14

km/h:
WS = mm x 3,14
mph:
WS = mm x 3,14

B

1x

km/h:
WS = mm
mph:
WS = mm

C

ETRTO	mm	km/h	mph
47-305	16x1.75x2	1272	790
47-406	20x1.75x2	1590	988
37-540	24x1.3/8 A	1948	1210
47-507	24x1.75x2	1907	1185
23-571	26x1	1973	1225
40-559	26x1.5	2026	1258
44-559	26x1.6	2051	1274
47-559	26x1.75x2	2070	1286
50-559	26x1.9	2089	1300
54-559	26x2.00	2114	1318
57-559	26x2.125	2133	1331
37-590	26x1.3/8	2105	1308
37-584	26x1.3/8x1.1/2	2086	1296
20-571	26x3/4	1954	1214
32-630	27x1.1/4	2199	1366
28-630	27x1.1/4 Fifty	2174	1347
40-622	28x1.5	2224	1380
47-622	28x1.75	2268	1410
40-635	28x1.1/2	2265	1409
37-622	28x1.3/8x1.5/8	2205	1374
18-622	700x18C	2102	1306
29-622	700x20C	2114	1318
23-622	700x23C	2133	1331
25-622	700x25C	2146	1343
28-622	700x28C	2149	1345
32-622	700x32C	2174	1366
37-622	700x35C	2205	1380
40-622	700x40C	2224	1393

Súčasným stlačením tlačítka SET a RESET vyvoláte funkciu svetla.

Lubovolným stlačením tlačítka sa displej rozsvieti, ďalším stlačením sa prepne funkcia

Dodáva : SLOGER s.r.o. Levice

www.sloger.sk